

# History

Beginning in 1973 with funding from the Alabama Department of Mental Health and Mental Retardation, the program was established as a ministry of St. Andrew's Episcopal Church in Birmingham. The housing program was in response to the need for community residences for deinstitutionalized consumers of the state mental health system. With help from the Episcopal Diocese of Alabama, the Agency located three large residences within walking distance of St. Andrew's Church that were easily converted to group home use. The program began with twenty-one residents. The program has moved to new facilities and can accommodate over thirty individuals.

# Mission

St. Andrew's Place exists for the purpose of providing basic care, necessities, socialization, and training for adults with mental retardation, so as to enable them to live in the community as independently as possible. The Agency recognizes that the universal human needs of a person labeled as mentally retarded are more important than the physical needs arising from the disability. We work to promote the growth and development of the whole person.

# Services

All services are tailored to the individual's needs.

- Housing
- Meals
- Basic Livings Skills Training
- Transportation
- Job Readiness
- Supportive Employment
- Health Maintenance
- Counseling

# Residential Facilities

Our Administrative Offices are located within the St. Andrew's campus at 1024 12<sup>th</sup> Street, South.

## Residential Facilities

An eight-bed home for males located at 1317 13<sup>th</sup> Street, South.

An eight-bed home for females located at 1321 13<sup>th</sup> Street, South.

A three-bed home for females located at 1509 12<sup>th</sup> Street, South.

A four-unit six-bed semi-independent apartment for males and females located at 1340 15<sup>th</sup> Avenue, South.

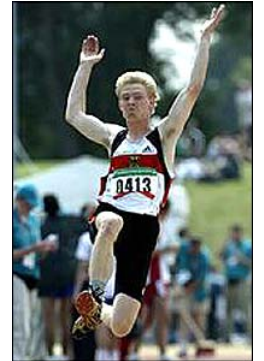
A four-unit eight-bed supervised apartment for males and females located at 1324 13<sup>th</sup> Place, South.

# Cost

The current annual cost of residential services at St. Andrew's Place is approximately \$25,000 per resident. Of that amount the MRDD Health Care Authority of Jefferson County reimburses \$15,000. The remainder is covered by resident rent (based on 75% of income) as well as donations and gifts from individuals and supporting organizations.

# Contributions

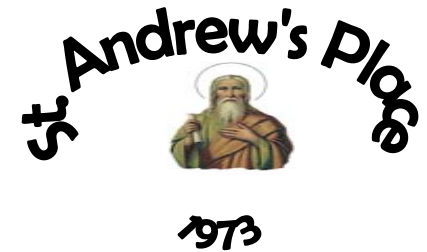
St. Andrew's Place is a 501(c)(3) nonprofit organization which makes contributions tax deductible within the limits established by the IRS. St. Andrew's Place must raise at least 10% of its annual operating from local gifts and in-kind donations.



St. Andrew's Place must raise at least 10% of its annual operating from local gifts and in-kind donations.

# Volunteer

St. Andrew's Place welcomes anyone who wishes to volunteer their time or expertise to improve the quality of the lives of our residents. Advocacy and Care Team participation are two important opportunities. Other activities may be tailored to match the interest and needs of the volunteer with those of the Agency.



**Residential Services for Adults  
with Developmental Disabilities**

1024 12<sup>th</sup> Street, South  
Birmingham, AL 35205  
205.322.4439  
205.322.4467 fax  
[www.saintandrewsplace.org](http://www.saintandrewsplace.org)